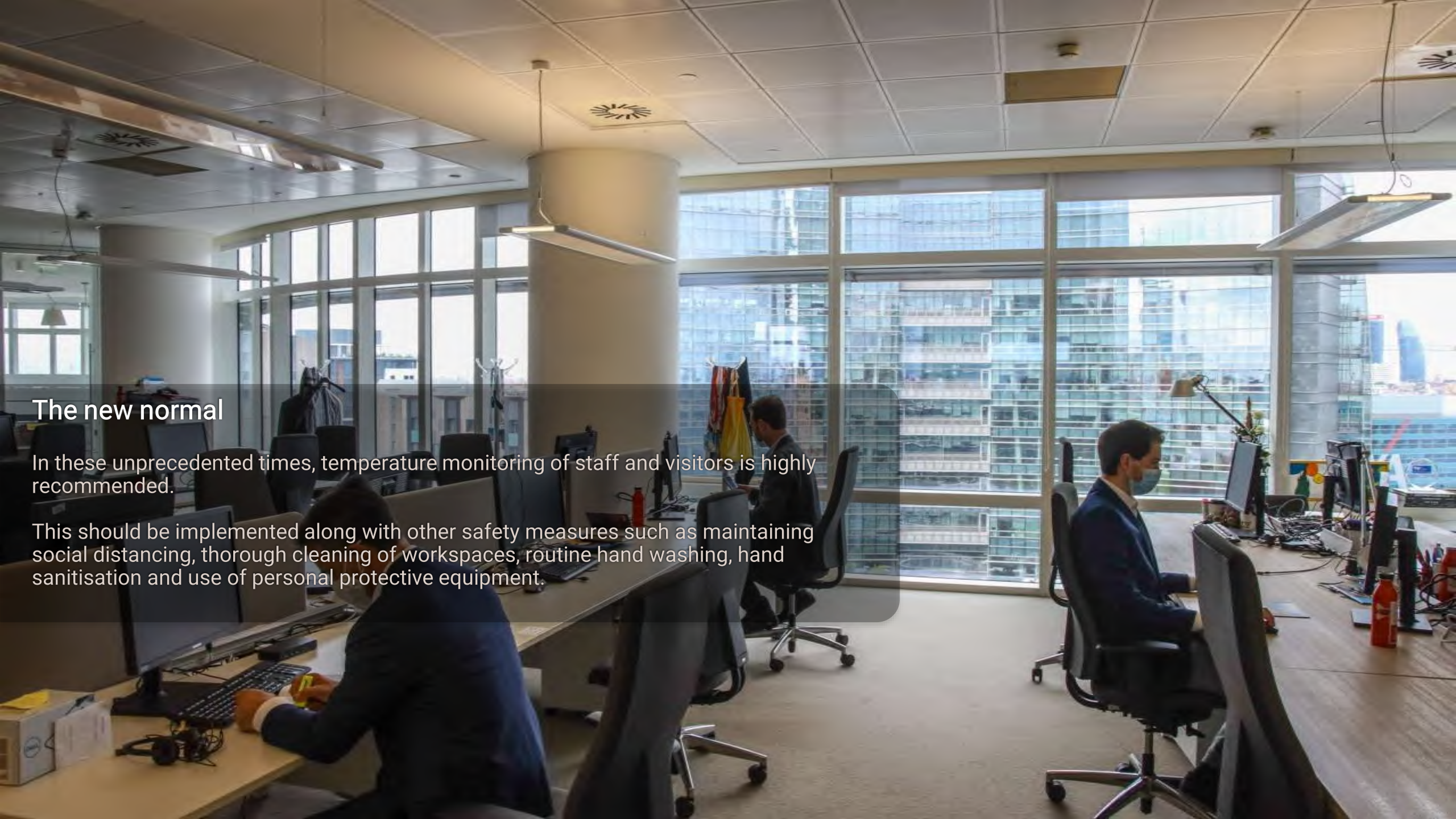




Smart Temperature Monitoring





A wide-angle photograph of a modern office interior. The office features large windows on the right side, providing a view of a city skyline. Several people are seated at long wooden desks, working on computers. The desks are equipped with multiple monitors, keyboards, and various office supplies. The office has a clean, professional look with a white ceiling and a light-colored floor. A large white pillar is visible in the center of the room. The overall atmosphere is bright and airy due to the natural light from the windows.

## The new normal

In these unprecedented times, temperature monitoring of staff and visitors is highly recommended.

This should be implemented along with other safety measures such as maintaining social distancing, thorough cleaning of workspaces, routine hand washing, hand sanitisation and use of personal protective equipment.





## A familiar sight

With up to an 81.8% chance of fever being the first symptom to show up in COVID-19 (according to a recent study by The University of Southern California), widespread and effective temperature checking could well be key in controlling the spread of this devastating and often difficult to detect disease.

### Handheld thermometer guns are not the answer

"These devices are notoriously not accurate and reliable," Dr. James Lawler, a medical expert at the University of Nebraska's Global Centre for Health Security, told The New York Times.

A reliable temperature monitoring system would be a good indicator of infection numbers in any given place. Likewise, as restrictions ease and we begin to return to the new normal, we must adapt more accurate monitoring of staff and the public.

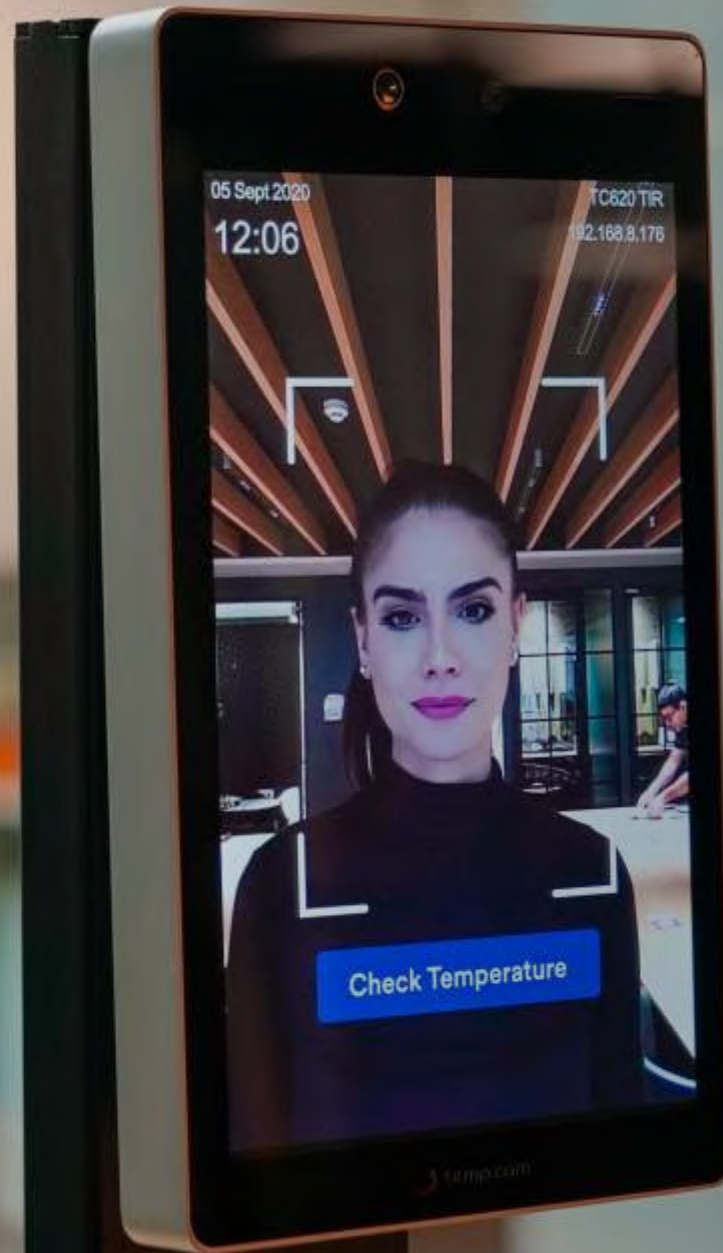


temp.cam is a highly effective, automatic temperature monitoring solution developed in the UK and in use around the world

- Temperature monitoring for individuals.
- Quick & contactless.
- Easy to use with large display.
- Built in infrared temperature sensor and camera.
- Audio alert to inform users if a high temperature is detected.
- Industrial Grade Thermal Sensor  $\pm 0.3^{\circ}\text{C}$  (Made in Germany).
- High temperature alerts sent by email.
- Real time remote monitoring via online dashboard.

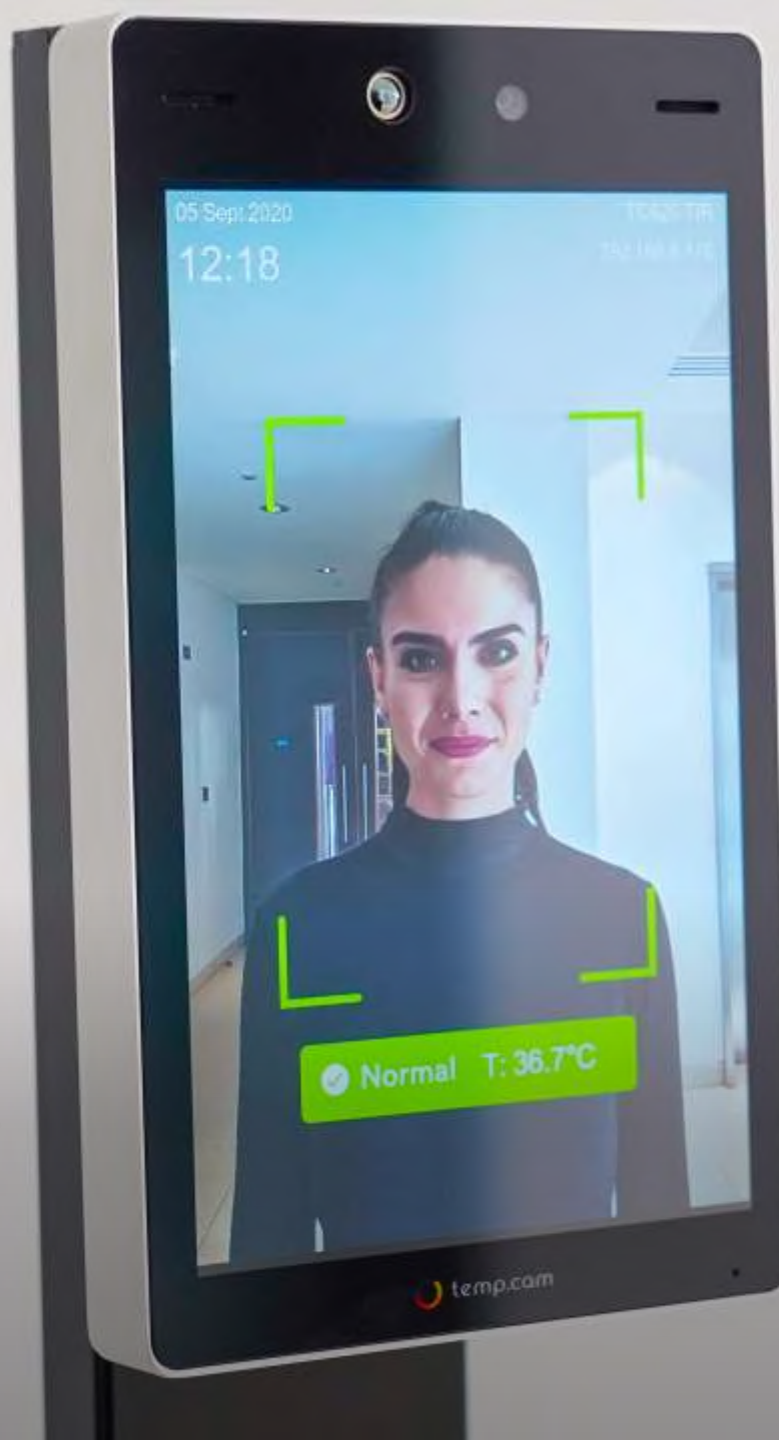






Prompt Screen

Normal Temperature Check  
(35.9 °C - 37.9 °C)

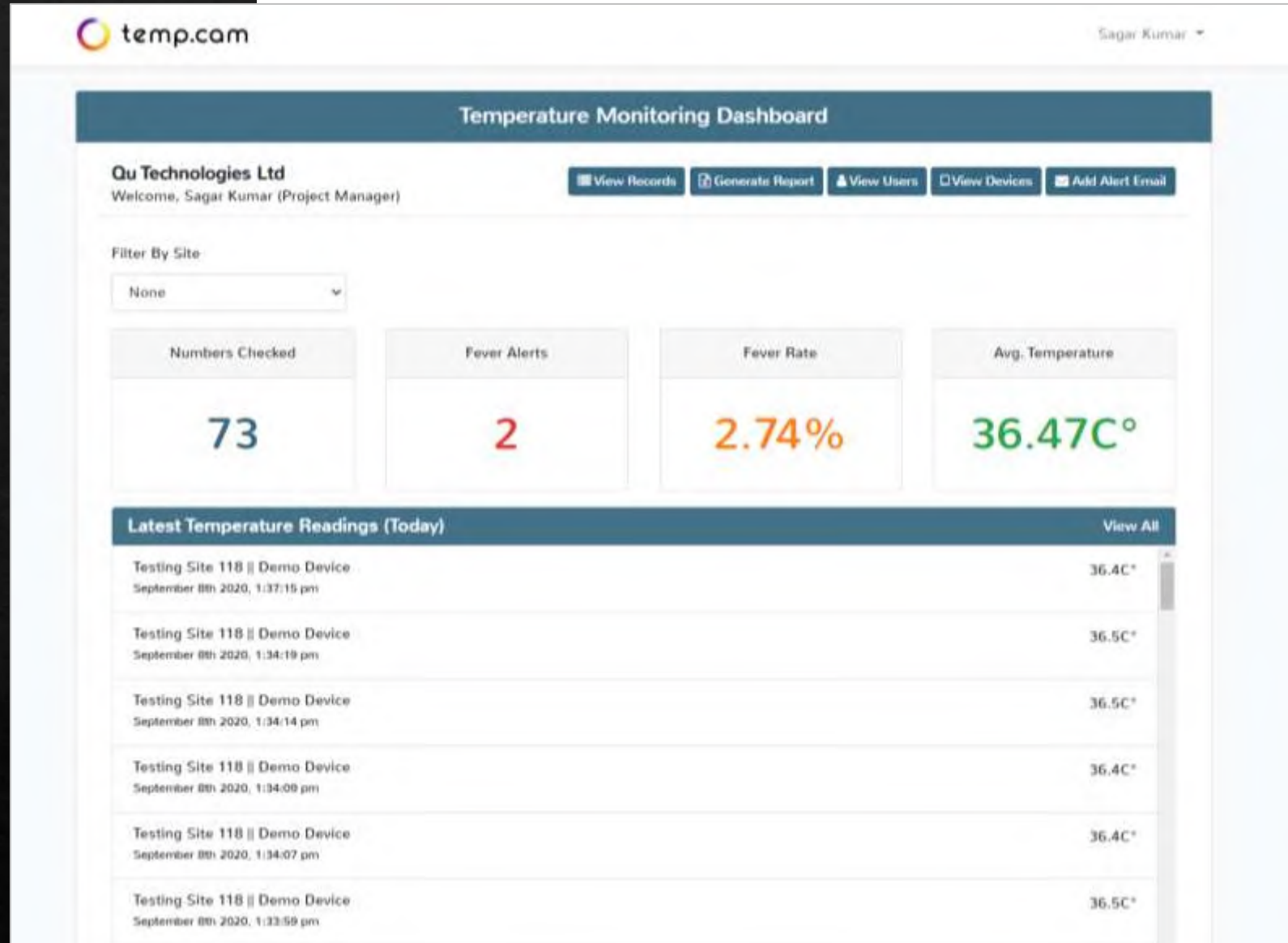


High Temperature Check  
(38°C and above)





# Remote monitoring dashboard





High  
temperature  
alerts sent by  
email

## High Temperature Alert @ Portman House

temp.cam <no-reply@temp.cam>  
To: admin@quscan.com

17:01



[Reply](#) [Reply all](#) [Forward](#) [Delete](#) [Add to Safe Senders](#) [Add to Blocked Senders](#)

temp.cam

Hello

A high temperature has been detected at one of your sites.



**Site Name:** Portman House

**Time:** Aug 18th 2020, 05:01:46 pm

**Temperature:** 38.5C

[See on Dashboard](#)

Thank you for using temp.cam!

If you're having trouble clicking the "See on Dashboard" button, copy and paste the URL below into your web browser: <http://dev.temp.cam>

© 2020 temp.cam. All rights reserved.

## Proven use in multiple industries

- 24/7 Automatic Monitoring
- 10,000+ Checks per day
- 8 Countries
- 250+ clients



**WESTERN POWER  
DISTRIBUTION**  
Serving the Midlands, South West and Wales

**VINCI**  
CONSTRUCTION | UK

**VEOLIA**

**UK Power  
Networks**

**Orthodontic**

**Transport  
for London**

**MILLBROOK**

**PEVEREL COURT CARE**  
Exceptional Elderly Care

**AFC  
WIMBLEDON**

**WILLMOTT DIXON  
CONSTRUCTION**

**NHS**

**abellio**  
london

**Metroline**

**Merseyrail**

**LORDSWOOD ACADEMIES TRUST**

**KAUTEX**  
A Tektron Company

**HAMPSTEAD**  
CHIROPODITIC PRACTICE

**Aspire**  
delivers

**West  
Midlands  
Railway**

**GOLDSTAR**  
TRANSPORT LTD

**JPRESTAURANTS**

**greateranglia**

**CELLO HEALTH**

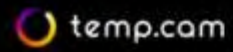
**EMR**  
EAST MIDLANDS RAILWAY

**arriva rail london**

**WHITTLEBURY  
PARK**



Reassure visitors & customers with real time temperature check data



YOUR BUSINESS NAME

STAFF & VISITORS TEMPERATURE CHECKS

10,529

Today

58,814

This Week

213,123

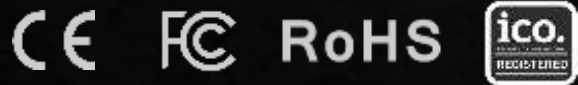
This Month

TOTAL : 467,275



# Technical Specification

- Assembled in the UK
- 12-month warranty
- ISO27001 Certified Secure UK data servers
- Custom Software
- Full technical support



## POWER & WEIGHT

DC12V / Consumption 5W  
Dimensions 215x125x20mm  
Tablet Weight < 1kg  
Parameters  
Range 35~42°C  
Precision  $\pm 0.3^{\circ}\text{C}$   
Detection distance 0.4m~0.7m  
Working Humidity 0%-90%

## CAMERA

Lens focal length: 1.8mm  
Field of View: 118°  
Mini illum: 0.01 Lux @ F1.2 colour mode  
Dynamic Range:  $\geq 100\text{dB}$   
S/N Ratio  $\geq 43\text{db}$  (AGC OFF)

## EXPOSURE

Program mode (customisable shutter interval), Shutter mode (1/5-1/20,000s) support for slow shutter  
White balance: Auto, indoor, outdoor, sodium lamp mode, manual  
Digital noise reduction: Support DNR, 3DNR  
Day & night mode: Fixed colour  
Video compression  
H.265 Main Profile / H.264 High-profile / M-JPEG / Max resolution: 1920x1080@30fps

## RESOLUTION

Mainstream: 1920x1080, 1280x960, 1280x720, 720x576 Sub stream: 640x480, 352x288, 320x240 176x144  
MJPEG 1920x1080, 1280x720, closed Output bit rate (CBR or VBR), Bitstream setting range: 32Kbps~10Mbps / Audio  
compression G711, PCM  
Character overlay: Date and time / Product ID / Device IP

## AI

Recognition speed  $\leq 300\text{ms}$   
Live detection support  
Mask detection support  
Body temperature support

## INTERFACE

Ethernet RJ45 interface Wiegand: 1ch Wiegand output interface  
Switch: 1ch relay output  
MIC: Built-in  
Audio: Built-in 2ch audio



## Advanced features



Upload staff images to log checks using facial recognition



Detect / Enforce face masks



Access control integration to open doors / gates



Multi user role based access



Custom solutions available to integrate Keypads / QR scanners to log staff checks



## Demo and further information

Qu Technologies Ltd T/A temp.cam  
2 Portman Street London W1H 6DU

W: [www.temp.cam](http://www.temp.cam)

E: [hello@temp.cam](mailto:hello@temp.cam)

T: 0208 087 3179 / 07763 500 368

Company Reg: 10856076 / VAT: 327226415