

# TEMPERATURE MONITORING TIPS



## It does not have to cost a small fortune

Military grade thermal cameras and sophisticated systems are good for the military and high footfall areas such as airports, commuter transport hub and large gatherings at sports or entertainment events.



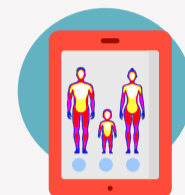
## As a rule of thumb

Expect to pay around £2000 for routine monitoring of up to a 100 people / £4000 for up to 200 people and so on.



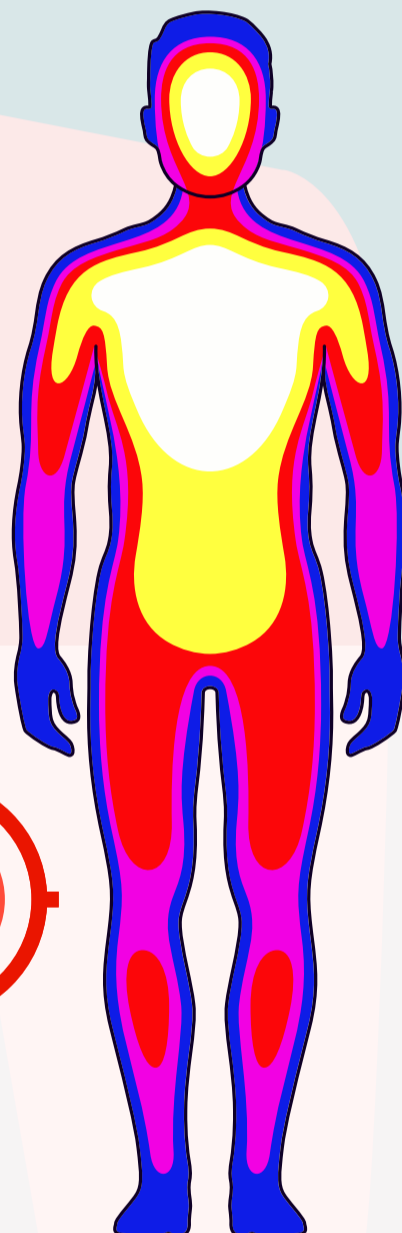
## Most businesses and organisations

can use temperature monitoring tablets as they are quick, accurate and fully automatic. A single tablet can easily check up to 80 people entering a building. You can place multiple devices to cover different entrances or floors. All tablets can connect to a single dashboard for remote monitoring and reporting.



## Good walk through cameras

with black body calibrators provide efficient routine detection of 200+ people. For example, students coming into school at the start of the day, entrances to events, community gatherings or Places of Worship.



## Keep it indoors.

Temperature sensors are highly sensitive objects and they work by acclimatising to their environment and use this as the reference point for temperature readings. Wind, direct sunlight, rain, humidity and variations in outdoor temperature throws in many variables leading to a loss in accuracy and reliability. **As tempting as it may be, do not try to check people's temperature outdoors "before letting them in".**



## Accuracy is important.

Using cheaper products or opting for walk through cameras without black body calibrators can mean the difference between a key worker doing their work or putting them in isolation or 2 weeks along with their households. Likewise, missing a person with fever can put the entire workforce at risk.

Go for tablet systems which provides +/- 0.3 C accuracy and Cameras with +/- 0.5C accuracy. Routinely check their performance by comparing with a quality conventional contact thermometer



## Get the distance right.

Tablet systems work best when the detection is done at 0.5m to 1m range. Place stickers on the floor to show users where to stand and ensure the tablet is placed at eye level height.



Walk through cameras are optimised to work at a 3m range. Barriers should be used to create channels for people to walk through and you should position the camera to detect at the recommended range.

## Be cool

We recommend a 5-10 minute cooling down period prior to having your temperature checked if you have exercised, run or cycled to work. The same applies if your temperature is raised due to hot weather or sun bathing.



## Check and double check

Anyone who raises a fever alert should wait for 5-10 minutes before checking their temperature again. If you find your temperature is still in the fever range, self-isolate and seek medical advice. Management should have clearly defined procedures for such instances and communicate them to all staff and visitors.



## Record keeping

of temperature checks, use of employee details and technologies such as facial recognition must be used within data privacy and protection rules. GDPR does not disappear as part of the new normal. Simple signage, obtaining consent from staff and auditing data storage, security and management systems are some of the ways you can ensure that you remain compliant.



In the absence of clear government advice around temperature monitoring, a sensible approach would entail researching the solutions available, discussing the benefits with employees, educating yourselves on best practices and properly planning the implementation of a good system which allows you and your staff to feel safe and remain productive.